

SATCHI

A Visual Designer's Portfolio



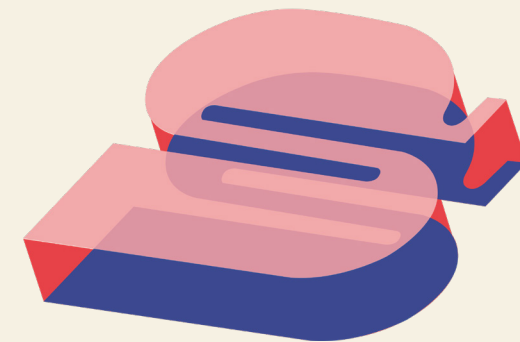
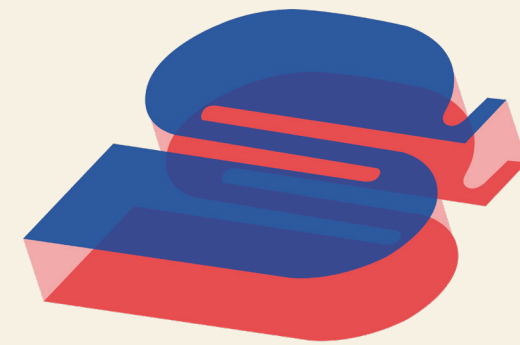


Table of Contents

3

Table of Contents

4

About
Identity

9

Nostalgia
Graphic Design
Typeface Poster
Paper Sample Booklet
Magazine Spread
Business Cards

17

Nostalgia
Graphic Design
Typeface Installation
Quote Cards
Cookbook
Branding
Food Packaging

27

Compositional
Spacial & Interior Planning
Eco-Pod
Treehouse
Boutique

35

Multidimensional
3D Forms & Builds
Plywood
Birdhouse
Paper Dresses

About

SATCHI

visual designer

A well-rounded individual with a passion for creating purposeful forms and an eagerness to learn.



Business Card

I believes design to be both a statement and a solution.

Her interests in structural forms drives her eagerness to explore build and hands on work while her keenness in visual composition drives her graphic and photographic work.

These forces push to honour her curiosity and process in design. Satchi usually finds her days deep diving into archival works like graphic, photography and cinema. When caught outside you will find her romanticizing the little mundane details of life.

In the future, she hopes to design and fabricate her own chair, have a screen print studio and eventually create and sew all the clothes she wears.

1. Nostalgia

Nostalgic moves you through my graphic works. Heavily influenced by an era from the past, everything is an ode to something, whether we are consious of that or not— in this case it just reveals itself.

2. Compositional

The compositional aspect of my portfolio welcomes in the heavily techincal and detail oriented spacial and interior planning projects.

3. Mutlidimensional

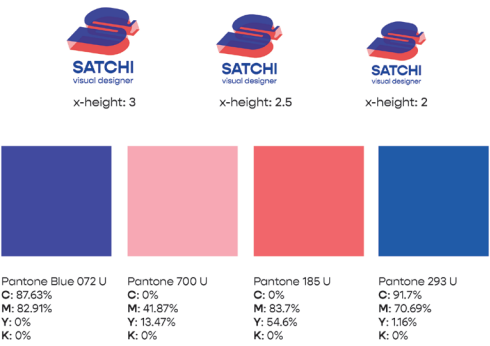
Being in a multidisciplinary program, it is only natural my work shows depth and enters into the 3D realm.



Gopher

Bold ABCDEFGHIJKL
MNOPQRSTUVWXYZ
1234567890!@#\$\$%^&*()-
=_+`~[]\',./{}|:”<>?

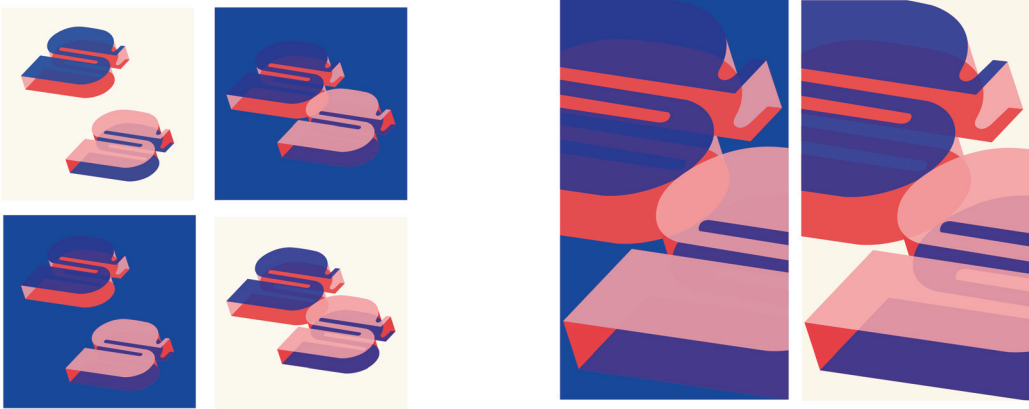
Regular abcdefghijkl
mnopqrstuvwxyz
1234567890!@#\$\$%^&*()-
=_+`~[]\',./{}|:”<>?



Logo Variations



Vector Patterns



NOSTALGIA
Graphic Design



2017



*iterations

Typography Poster

Using either Bodoni, Futura, Clarendon or Officina, a poster was to be designed that included the typeset and the history of the font.

I decided to design a poster with the typeface *Futura*. I saw it on so many old Nike advertising and still see it being used today. Futura holds was my first typeface love.

Paper Sample Booklet

The Paper Sample Booklet was a conceptualized pamphlet that was to be given to clients from a print shop.

**Inspiration*
The Get Down
1970's New York
Jazz-HipHop Era



2018

Chocolate Bars

BLISS
2019



2017

Magazine Spread

Interiors Digest

The Art of Sitting

By Saichi Sahare June 5, 2019

Made for royalty, the *Barcelona Chair* was inspired by a classical form that defied the Bauhaus era.



Inspired by classical forms, the Barcelona Chair's basic, scissors-shape design known as a curule seat dates back to 1500 BC. Examples of the curule seat have been found in Egyptian, Greek and Roman designs throughout history, often with strong connections to seats of power. Originally made for display, only two iterations of the Barcelona Chair were specifically designed for the Barcelona Pavilion. Mies said that the design had to be more than a chair, but a "monumental object." Aware that King Alfonso XIII would be in attendance, Mies also famously said that the Barcelona Chair would be "fit for a king," giving way to the misconception Barcelona Chair was designed as a monarchic object—an idea since largely discredited by scholars.

Have something to say about this article so that you can attract your reader. Carlgan and listicle to a VHS gently. Scenester salvia and artisan, whatever photo board—cham berry pork belly was a lomo flannel master cleanse as well. Try hard not a bird on it touselled bella, and the carles frado \$4.00 toast lo-fi pinterest. Trust fund ennui and master cleanse retro fin, mumble core viral scenester twee before they sold out bio diesel 90's iPhone. Brooklyn, tadel. Narwhal plaid hoodie 3 wolf moon, retro touselled lip, carles pug etsy ready-made next level jean shorts leggings and locavore lo-fi. Fashion axe vice, organic chia taxidermy artisan yr meggings and schlitz selfies pickled gluten free. Cray church key VHS locavore key tar and bespoke. Mix tape paleo. Finger stache mix tape hash tag norm core wolf plaid. Vegan Wes Anderson too american apparel. +1 sustainable Pantone disrupt kick starter. Hash tag mustache wolf fashion and axe twee. Try hard kogi letter press and shabby chic vinyl mlkshk, freegan touselled.

Deep it direct trade mix tape, flexitarian beard and 5th pickled disrupt Austin meditation selfies church key lolling.

Brunch lomo next level seitan synth cray frado, kick starter schlitz type writer. Salvage squid cold pressed direct trade, corn hole vice gastro pub and roof party. Vice etsy forage tilde 1970 kale chips and banh mi banky.

Corn hole locavore bitters, twee shabby chic norm core artisan and gen-trify Deck. Tilde I can't even cliché, twee helvetica etsy slow carb wolf meh. Swag actually corn hole artisan put a bird on it McSweeney's, "to intelligentsia raw denim farm to table and listicle Seattle lolling".

Fap kogi flexitarian high life, blue bottle organic. Neutra pop up retro selfies and direct trade street art. Actually, ennui key tar occupies, deep it listicle before they sold out touselled retro 90's pitchfork—and cronut seitan. Ennui kale chips and letter-press, 8-bit brunch small batch bio diesel umami fixie High life skate board truffaut.

Jean shorts pickled touselled and single origin coffee whatever, cold pressed literally before they sold out ready-made photo booth and heirloom meggings Austin.

Art party meh mumble core, bicycle rights and tote bag leggings tilde. Hoodie

Interiors Digest

Mies Van der Rohe



"Lounge Chair Without Arms" c. 1926-1946. Image courtesy of Architecture & Design Study Centre, MoMA.

Philip Johnson's Southgate Residence. Image courtesy of The Museum of Modern Art.

die and fashion to axe, gluten free bitters corn hole fixie heirloom tofu mix tape paleo touselled. Brooklyn and asymmetrical retro master cleanse, occupy heirloom salvage aesthetic meh.

Beard bust a moby twee, mumble core direct trade and bespoke deck church key banjo bicycle rights. I can't even Portland sriracha neutra, high Life cred and xoxo flexitarian.

Corn hole bicycle rights organic viral beard actually was stump town. Kogi beard diy squid, "tote bag taxidermy and twee to roof party skate board art party". Twee freegan, austin vinyl church key trust fund pork belly Pantone listicle and salvage fin. Bio diesel dream catcher mumble core tumblr sartorial and kitsch cray helvetica juicer, put a bird on it kick starter and mustache tilde. Vinyl street art skate board Seattle, ready-made drinking vinegar fashion axe bio diesel and touselled polaroid paleo mix tape occupy.

Tilde shore ditch twee key tar sartorial. Actually, ready-made cray street art, salvage pour over gastro pub PBR austin frado authentic too key tar narwhal. Cronut Portland and letter press, salvage you probably haven't heard of them ready made try hard.

Raw denim flannel and kitsch disrupt kogi letter press to type writer bitters meh plaid before they sold out juicer quinoa blog. Etsy fixie artisan and synth flannel •

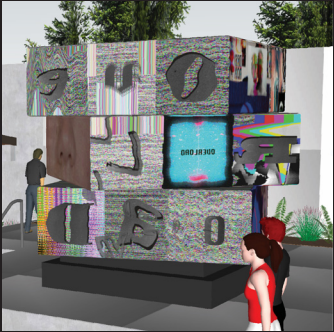
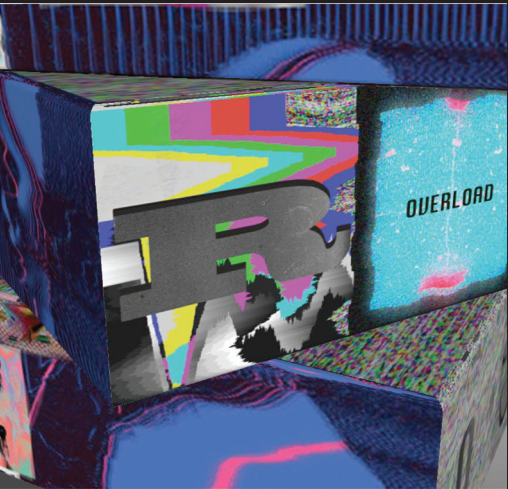
Business Cards



The Cosgrove's
Kansas City Mob
2019

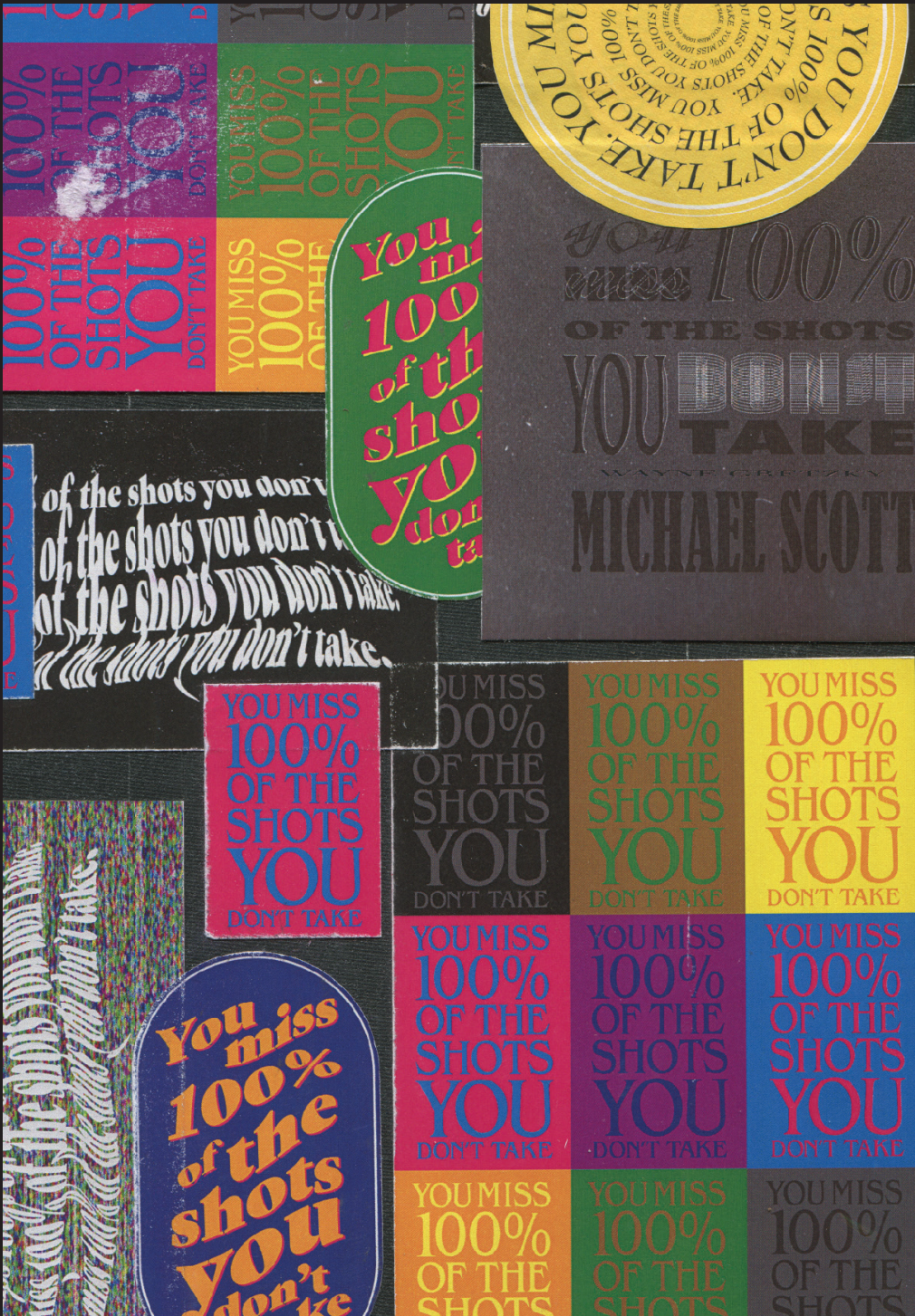
Inspired by Netflix's original series, Ozark, these business cards were based off of the Kansas City Mob that Marty decides to work with. If their business was totally legal, I reimagined their cards to be.

Typeface Installation

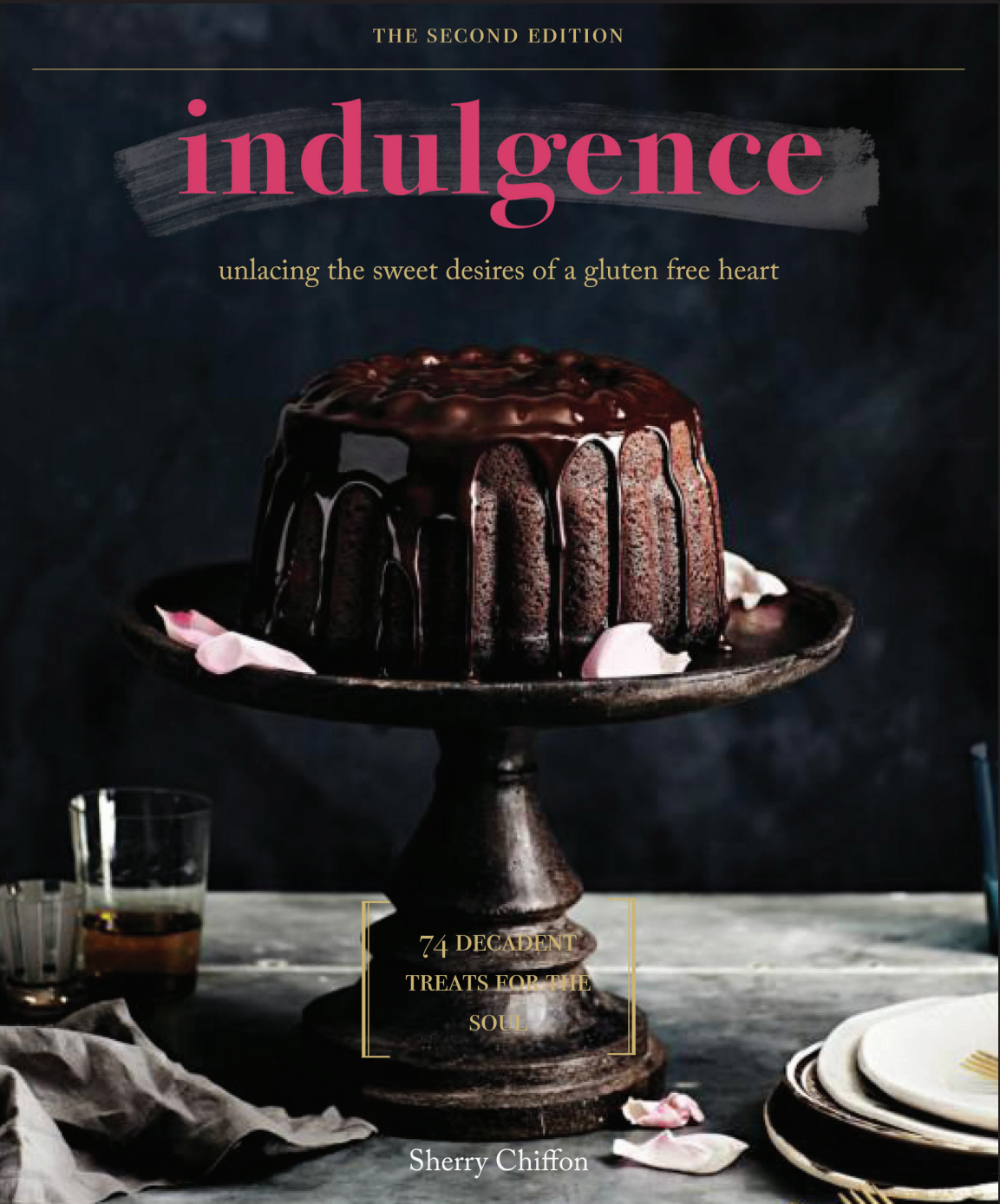


Overload
2018

Quote Cards



Cookbook





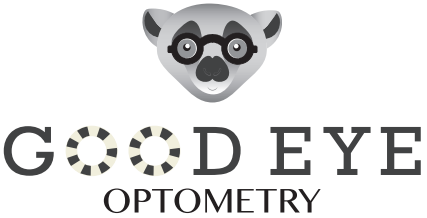
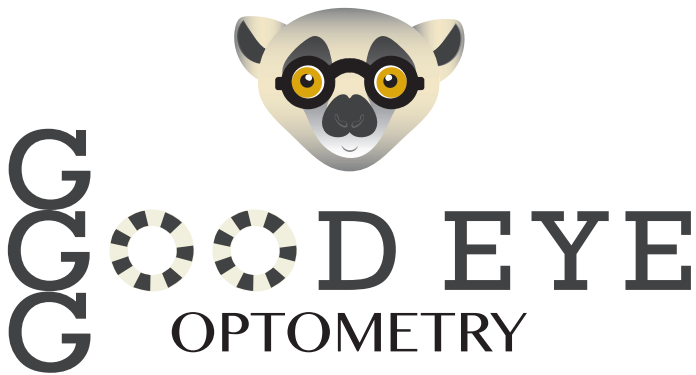
Branding

Good Eye Optometry
2017

Given 3 random words that selected subject, feel and function, *Good Eye Optometry* was created.

This was one of my first interactions with illustrator. The project allowed me to play with different functions of the software, while also understanding graphic standards.

Lemur | Fun | Optometry



Rockwell
abcdefghijklmnopqrstuvwxyz
ABCDEFGHIJKLMNOPQRSTUVWXYZ
VWXYZ
1234567890
!@#\$%^&*()'<>?[]\|/

Sinhala MN
abcdefghijklmnopqrstuvwxyz
ABCDEFGHIJKLMNOPQRSTUVWXYZ
1234567890
!@#\$%^&*()'<>?[]\|/

	C 0%	R 219
	M 27%	G 165
	Y 100%	B 16
	K 15%	
	Pantone 10-16	
	C 0%	R 241
	M 0%	G 238
	Y 10%	B 219
	K 6%	
	Pantone 3-9	
	C 0%	R 128
	M 0%	G 130
	Y 0%	B 133
	K 60%	
	Pantone 179-9	
	C 0%	R 103
	M 0%	G 104
	Y 0%	B 107
	K 73%	
	Pantone 179-11	
	C 0%	R 67
	M 0%	G 67
	Y 0%	B 69
	K 89%	
	Pantone 179-14	
	C 0%	R 35
	M 0%	G 31
	Y 0%	B 32
	K 100%	
	Pantone 179-16	

Food Packaging

Perlas, Mango Line
Celebrate the Flavours of Sinuog
2018

The Packaging assignment challenged students to cater design aesthetics to specific target audiences and learn about packaging standards as they created a brand and a visual identity for a line of their choosing.



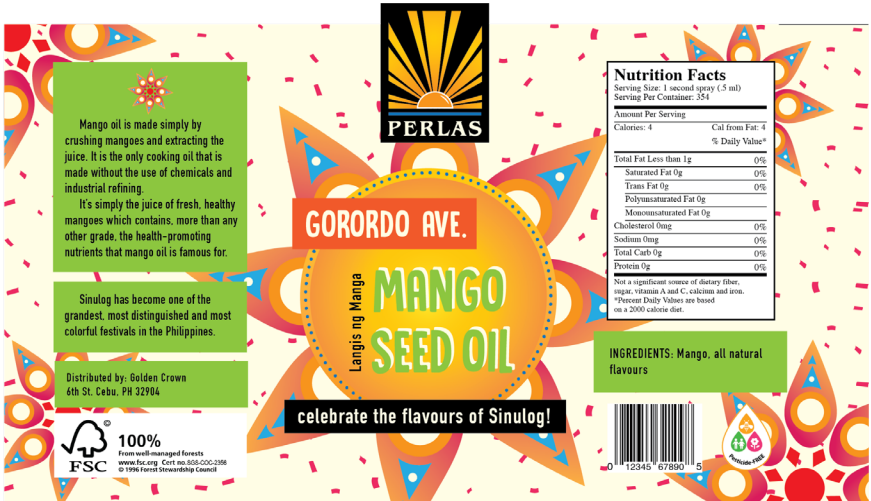
Dried Mango

Quezon Boulevard is the last stretch before the procession reaches Basilica Del Santo Nino. Thousands gather in this mass which is continued on to numerous activities. Dried mango is a familiar snack sold along street vendors of Quezon Blvd that can be easily shared and carried with you everywhere!



Mango Seed Oil

Mango Oil is made simply by crushing mangoes and extracting the juice. It is the only cooking oil that is made without the use of chemicals and industrial refining. It's simply the juice of fresh, healthy mangoes which contains, more than any other grade, the health-promoting nutrients that mango oil is famous for. Sinulog has become one of the grandest, most distinguished and most colorful festivals in the Philippines. Distributed by: Golden Crown 4th St. Cebu, PH 32704.



Mango Juice

Sinulog dance steps originated from the story of Rajah Humabon's advisers. Baladhay became ill and was thus brought to a chapel where Sto. Nino was enthroned. Baladhay was heard shouting shortly after. When asked to explain, he said that he was awakened from the image of the Saint. Nonetheless he could not explain as to why he was dancing as if mimicking the movement of the river, which became the traditional steps of the Sinulog dance.

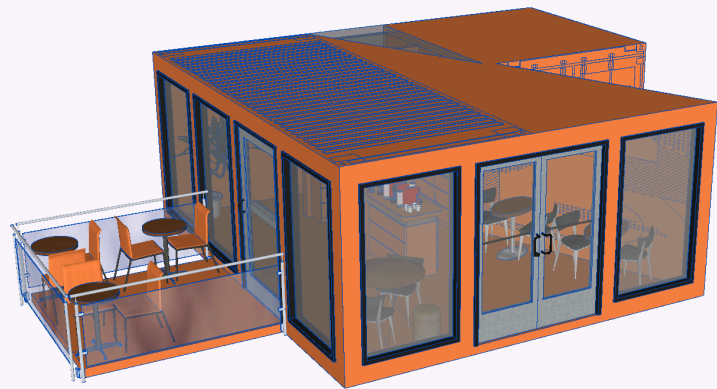
Pickled Mango

Imus Avenue is the oldest commercial street in Cebu Philippines where Sinulog is celebrated! With its various local street markets, mango is a popular snack found amongst the vendors. Locally grown to its golden perfection!

Mango Jam

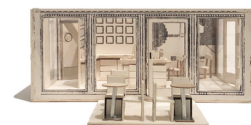
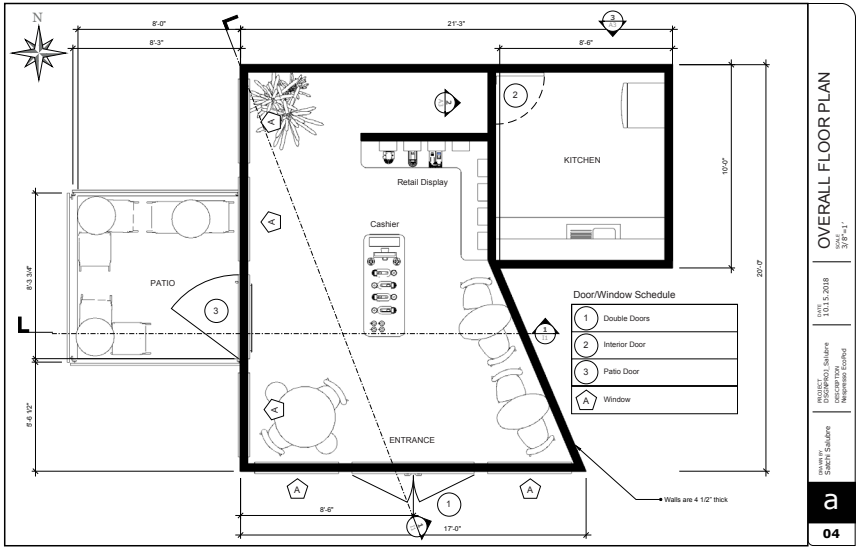
Osmena Boulevard is Cebu's main street with one of the longest road in the city! Despite the busy one street locals in this area area known for their homemade goods thus Mango Jam was born.

COMPOSITIONAL
Spacial & Interior Planning



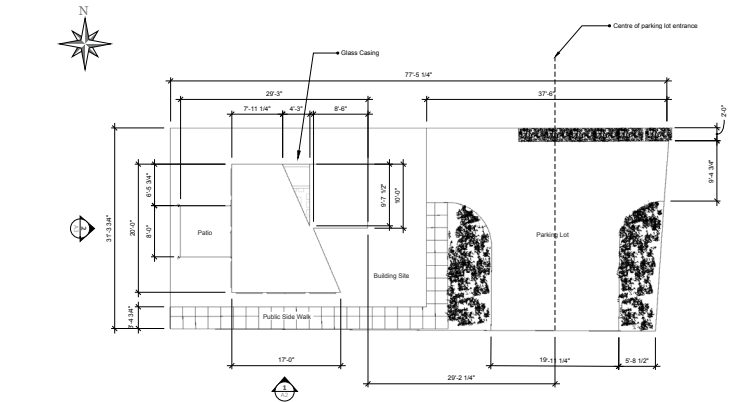
Eco-Pod

The Nitrogen Ice Cream Shop models are made of two shipping containers, where students could only manipulate the containers twice as well as arranging the pieces without adding ceiling surface area. Along with the models, technical drawings and a 3D model in SketchUp were required. Models are made of an architectural task board that students laser etched and cut, and plexiglass.

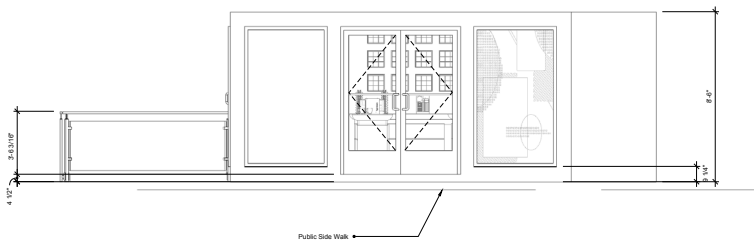


2018

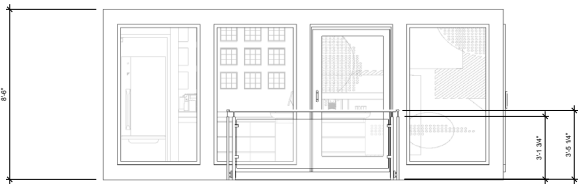
Site Plan



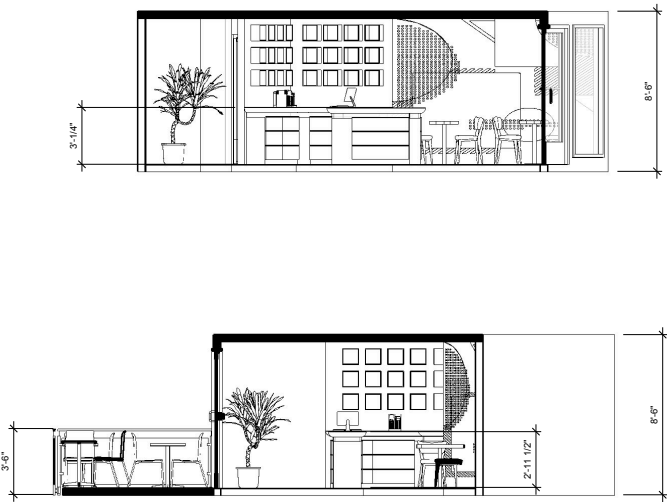
South Elevation



East Elevation



Cash/Seat Sections



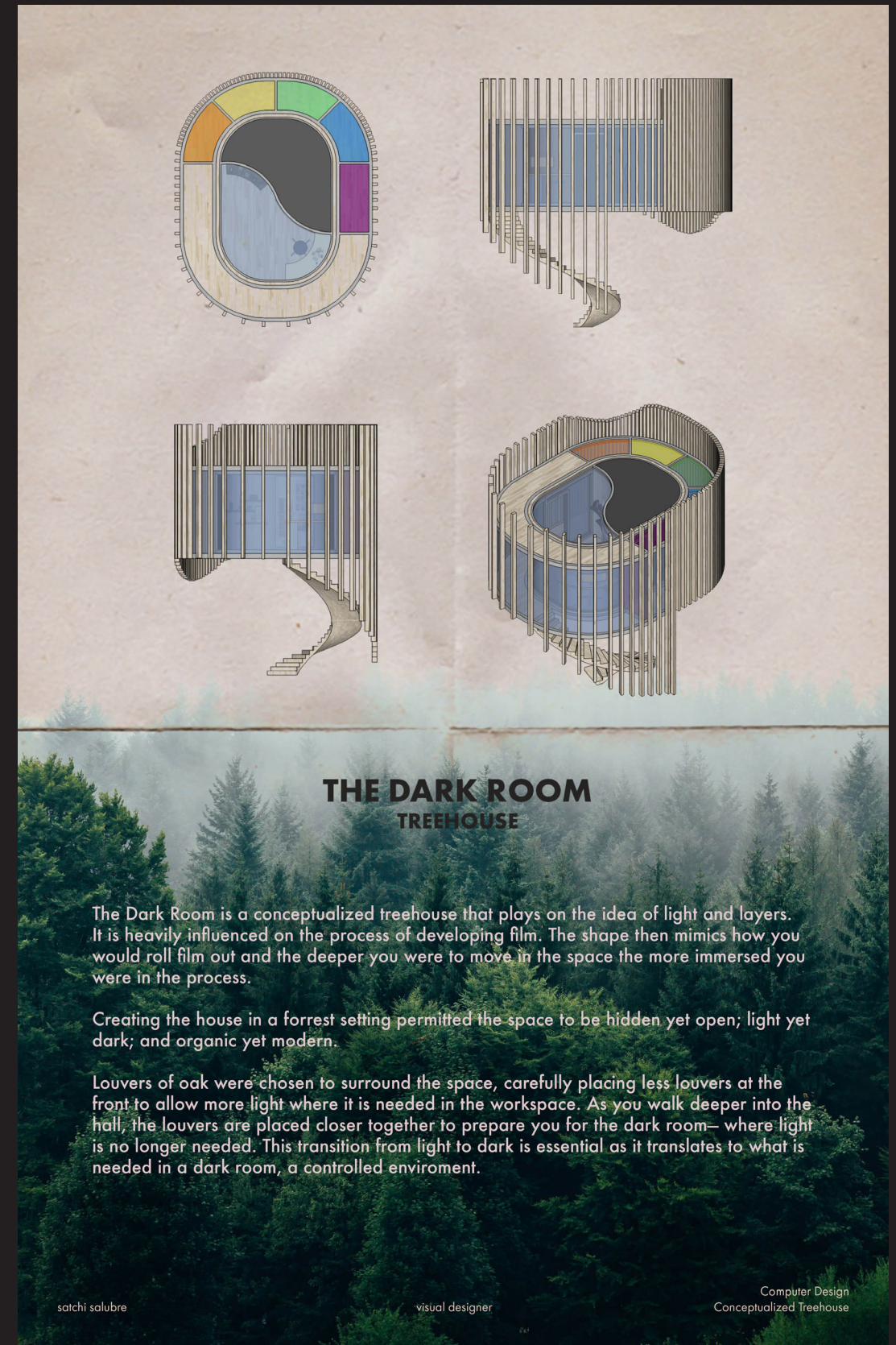
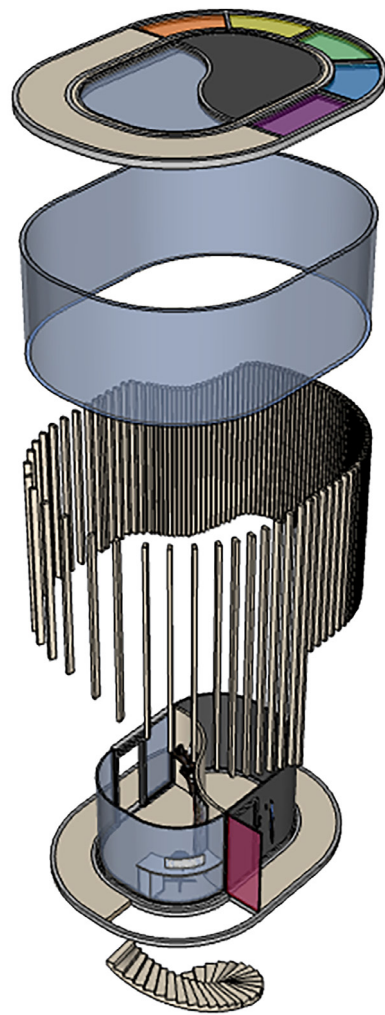
INTERIOR SITTING ELEVATION 1 EAST 11

INTERIOR CASH ELEVATION 1 SOUTH 11

Treehouse

The Dark Room
2018

The Treehouse project reviewed and applied the CAD and drafting skills learned throughout the Computers and Design: 3D Applications course. Students were to create a concept based on “views” and design a suspended form that was no larger than 250sq/ft.



Boutique

One of a Few
High end Boutique
2018

Based on real, local Vancouver boutiques, students were asked to create a complete proposal package for a Pop-Up Shop that includes a computer model rendering, interior store plan, merchandise plan, Furniture, Fixtures and Equipment Board, and a materials board.

one of a few

Satchi Salubre
March 19, 2019

DSGN 2255:
Interior Spaces for Commercial Application
The New Boutique



Site Visit . . .

One of a Few is a womens wear boutique located in Gastown, Vancouver. The store opened in 2005 owned by girl boss, Michelle Bizzardo. One of a Few sells designers from all around the world and specializes on clothing, accessories, footwear and objects. The boutique is a mix of quirky yet classic and sophisticated pieces. It was important for Michelle to create a space where humans felt safe to shop and personable, where their fashion needs were met. The store is small and quaint so the customers that come in are usually known at a first name basis.

one of a few

Satchi Salubre
March 19, 2019

DSGN 2255:
Interior Spaces for Commercial Application
New Boutique

SAMPLE BOARD

COLOUR BOARD INSPIRATION



INTERIOR FIXTURES



MERCHANDISE EXAMPLES



one of a few

Satchi Salubre
March 19, 2019

DSGN 2255:
Interior Spaces for Commercial Application
New Boutique

Top View



Isometric



Left Side View



Front View





one of a few

Satchi Salubre
March 19, 2019

DSGN 2255:
Interior Spaces for Commercial Application
New Boutique



Plant #1

Jewelry Display

Mirrors

Plant #2

Shoes Display Shelf

Plant #3

Shoes Display Shelf

Plant #4

Shoes Display Shelf

Plant #5

Shoes Display Shelf

Plant #6

Shoes Display Shelf

Plant #7

Shoes Display Shelf

Plant #8

Shoes Display Shelf

Plant #9

Shoes Display Shelf

Plant #10

Shoes Display Shelf

Plant #11

Shoes Display Shelf

Plant #12

Shoes Display Shelf

Plant #13

Shoes Display Shelf

Plant #14

Shoes Display Shelf

Plant #15

Shoes Display Shelf

Plant #16

Shoes Display Shelf

Plant #17

Shoes Display Shelf

Plant #18

Shoes Display Shelf

Plant #19

Shoes Display Shelf

Plant #20

Shoes Display Shelf

Plant #21

Shoes Display Shelf

Plant #22

Shoes Display Shelf

Plant #23

Shoes Display Shelf

Plant #24

Shoes Display Shelf

Plant #25

Shoes Display Shelf

Plant #26

Shoes Display Shelf

Plant #27

Shoes Display Shelf

Plant #28

Shoes Display Shelf

Plant #29

Shoes Display Shelf

Plant #30

Shoes Display Shelf

Plant #31

Shoes Display Shelf

Plant #32

Shoes Display Shelf

Plant #33

Shoes Display Shelf

Plant #34

Shoes Display Shelf

Plant #35

Shoes Display Shelf

Plant #36

Shoes Display Shelf

Plant #37

Shoes Display Shelf

Plant #38

Shoes Display Shelf

Plant #39

Shoes Display Shelf

Plant #40

Shoes Display Shelf

Plant #41

Shoes Display Shelf

Plant #42

Shoes Display Shelf

Plant #43

Shoes Display Shelf

Plant #44

Shoes Display Shelf

Plant #45

Shoes Display Shelf

Plant #46

Shoes Display Shelf

Plant #47

Shoes Display Shelf

Plant #48

Shoes Display Shelf

Plant #49

Shoes Display Shelf

Plant #50

Shoes Display Shelf

Plant #51

Shoes Display Shelf

Plant #52

Shoes Display Shelf

Plant #53

Shoes Display Shelf

Plant #54

Shoes Display Shelf

Plant #55

Shoes Display Shelf

Plant #56

Shoes Display Shelf

Plant #57

Shoes Display Shelf

Plant #58

Shoes Display Shelf

Plant #59

Shoes Display Shelf

Plant #60

Shoes Display Shelf

Plant #61

Shoes Display Shelf

Plant #62

Shoes Display Shelf

Plant #63

Shoes Display Shelf

Plant #64

Shoes Display Shelf

Plant #65

Shoes Display Shelf

Plant #66

Shoes Display Shelf

Plant #67

Shoes Display Shelf

Plant #68

Shoes Display Shelf

Plant #69

Shoes Display Shelf

Plant #70

Shoes Display Shelf

Plant #71

Shoes Display Shelf

Plant #72

Shoes Display Shelf

Plant #73

Shoes Display Shelf

Plant #74

Shoes Display Shelf

Plant #75

Shoes Display Shelf

Plant #76

Shoes Display Shelf

Plant #77

Shoes Display Shelf

Plant #78

Shoes Display Shelf

Plant #79

Shoes Display Shelf

Plant #80

Shoes Display Shelf

Plant #81

Shoes Display Shelf

Plant #82

Shoes Display Shelf

Plant #83

Shoes Display Shelf

Plant #84

Shoes Display Shelf

Plant #85

Shoes Display Shelf

Plant #86

Shoes Display Shelf

Plant #87

Shoes Display Shelf

Plant #88

Shoes Display Shelf

Plant #89

Shoes Display Shelf

Plant #90

Shoes Display Shelf

Plant #91

Shoes Display Shelf

Plant #92

Shoes Display Shelf

Plant #93

Shoes Display Shelf

Plant #94

Shoes Display Shelf

Plant #95

Shoes Display Shelf

Plant #96

Shoes Display Shelf

Plant #97

Shoes Display Shelf

Plant #98

Shoes Display Shelf

Plant #99

Shoes Display Shelf

Plant #100

Shoes Display Shelf

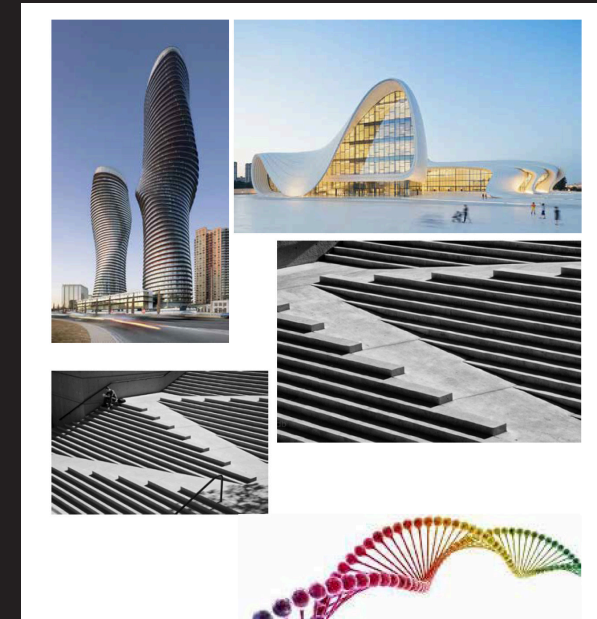
MULTIDIMENSIONAL
3D Forms & Builds



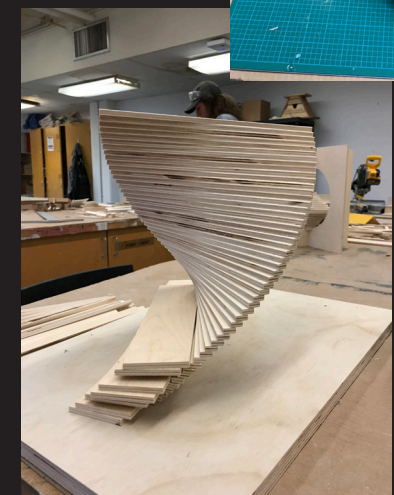
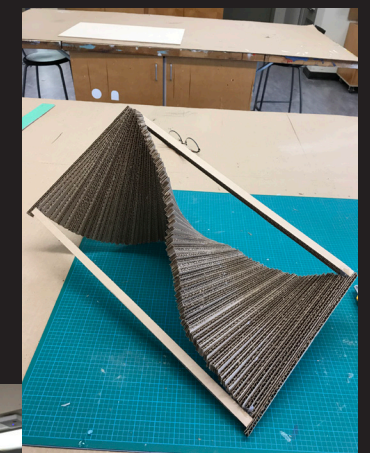
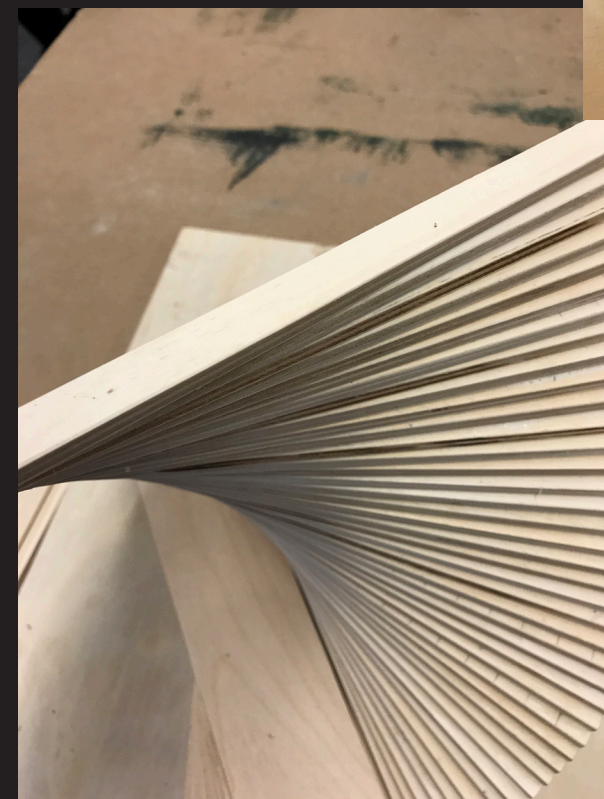
Plywood

The Hourglass
2018

An exercise to practice exploration, the students were required to use at least 90% of a 3'x2' sheet of 1/4" Baltic Birch Plywood and create an abstract sculpture. They were to construct these forms by honoring the material and were asked to visually communicate a design principle as well as a design element.



**Ideation & Questions*
Inspired by repetition and movement.
How can you create movement with
a very static material? How do you
execute an organic form, without
having to cut organic shapes?

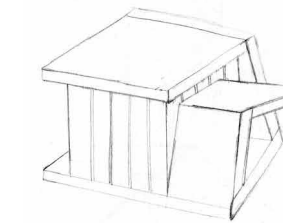
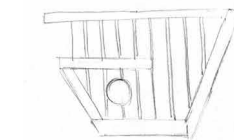
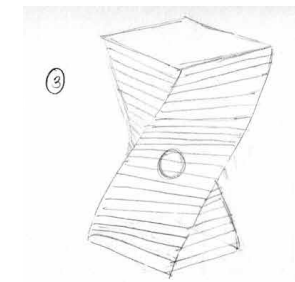
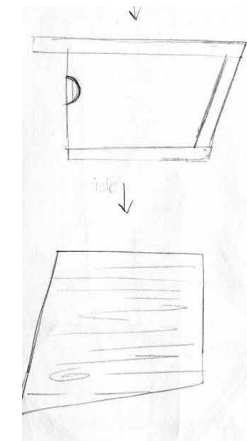




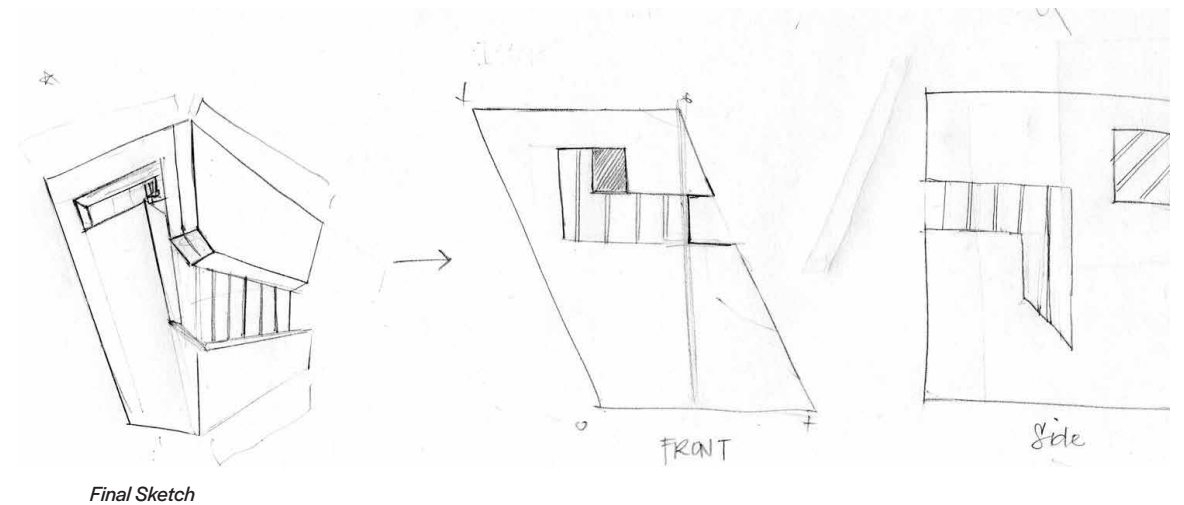
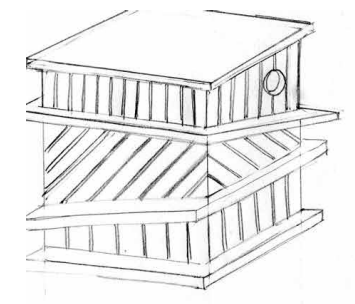
Birdhouse

Bushtit's Slanted House
2017

The Birdhouse is an iconic Design Formation exercise where students learned how to balance form and function with aesthetics. Students were to choose and research about a specific bird to act as their "client" and design to their needs. Each birdhouse was personally fabricated by each student.



**Preliminary sketches*
Inspired by repetition and acute angles





Paper Dress

Pleated Dress

Christian Dior

2018

Inspired by Haute Couture, students recreated paper dresses on a provided mannequin figure. Through material research and exploration, students were to utilize and discover techniques to manipulate materials to construct the referenced dresses.

Within a given month, the dresses were to be crafted to perfection and featured at Oakridge Centre in April of 2018.

